



Agisoft Metashape Training

Value Addition | Offline/Online

Duration: 24 hours

REGISTER NOW



KHAGOLAM

Institute of Geoinformatics

www.khagolam.com | info@khagolam.com | +91 98929 98626



Course Information

Course Title: **Working with Agisoft Metashape**

Duration: **24 hours**

Training Modes: **Offline/Online/Hybrid | Full Time/Part-time**

Timing: **Min 3 hours/day | Max 8 hours/day**

Course Eligibility

- Knowledge of computers
- Graduates, Post Graduates, ITI / Engineers

Fee

20,000 INR, for resident Nationals of India, Nepal, Bhutan, Bangladesh, Sri Lanka and Maldives, & Myanmar.

500 USD, For Non-Residents of India.

INSTALMENTS: 5,000 on registration.
15,000 - before the course starts.

Overview

Agisoft Metashape is a leading software for processing Drone (UAS/UAV) data. Software that enables users transformation of aerial photo data all the way to accurate photomosaics and DEMs of high accuracy, all from photographs. Learn depth knowledge of the cutting edge Photogrammetric software Agisoft Metashape.

A course designed for land surveying professionals. This training course will teach you how to process drone surveying data, RTK/PPK and non-RTK drone data in Agisoft Metashape and produce traditional surveying like contour, volumes, plan table survey map outputs along with DEM, point cloud. This course you will learn will learn about creating Drone Models and Maps with Agisoft Metashape, process of autonomous drone flight for building 2D and 3D Models.



Topic covered

1. Introduction to Photogrammetry, Modelling with overlapping images
2. Introduction to 2D and 3D modelling with Drone in Agisoft Metashape.
3. Overview of tools for capturing drone data
4. Check image quality and alignments
5. Interior orientation and camera calibration
6. Know strategies for Control and check points for aerial surveys
7. Optimizing alignment and building the dense point cloud
8. Geometry and mesh editing
9. Creating texture DEM, orthomosaic with and without GCP
10. Know post processing options and possibilities
11. Process of producing traditional topographical maps with ground contours. Like total station land survey maps.

How to Apply

Step 1: register at: <https://www.khagolam.com/home/register>

Step 2: Check mail for course & bank details

Step 3: Transfer payment & share transaction receipt on What's App

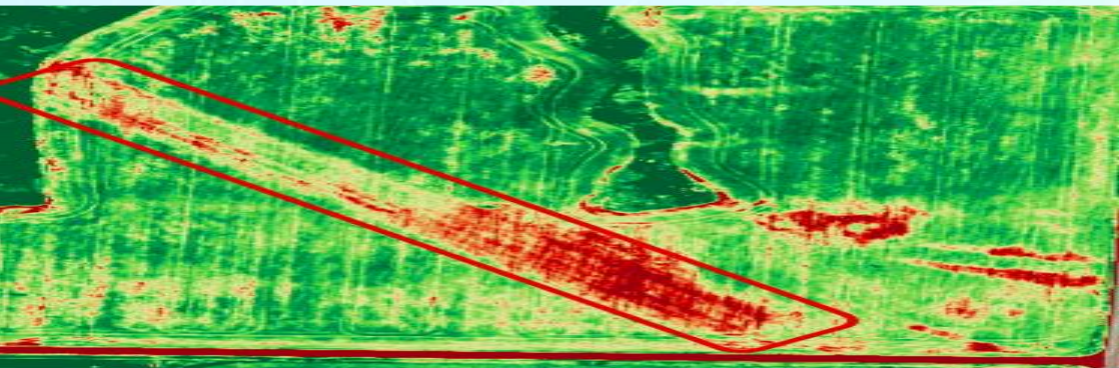
Step 4: You will receive registration confirmation, by SMS/Call/Whats App.

REGISTRATION SHALL CLOSE 4 DAYS BEFORE THE START DATE. SPOT REGISTRATIONS ARE NOT ALLOWED.

FAQ's

Q: Does fees include accommodation and food?

A: No. but we can help you to get the nearest accommodation.





Why Khagolam:

- Specialize institute for geospatial technologies
- Job oriented curriculum
- Comprehensive training material
- 100% placement assistance
- Professional Trainers
- Exposure to live projects
- Flexible timings
- Exposure to 3D GIS
- Practice, aptitude and interview rounds
- e-library facility



Khagolam Institute of Geoinformatics

Mumbai | Pune

 +91 989299 8626

info@khagolam.com | www.khagolam.com

Be in touch @   

